

Cube code: **MCIM8**

• **storycard in**

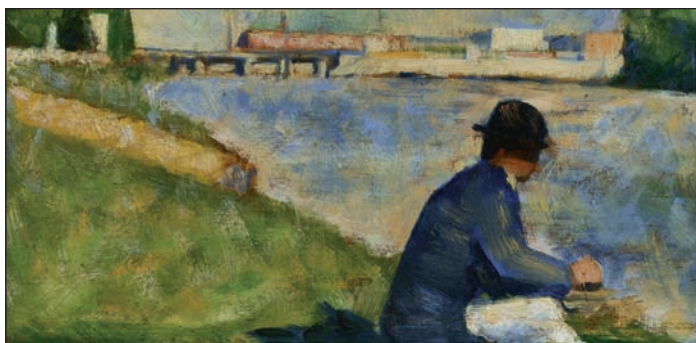
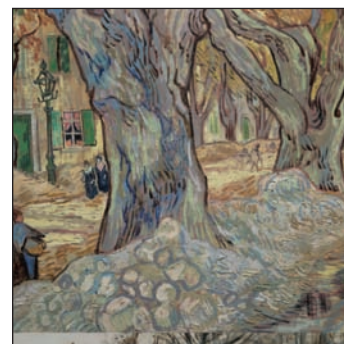
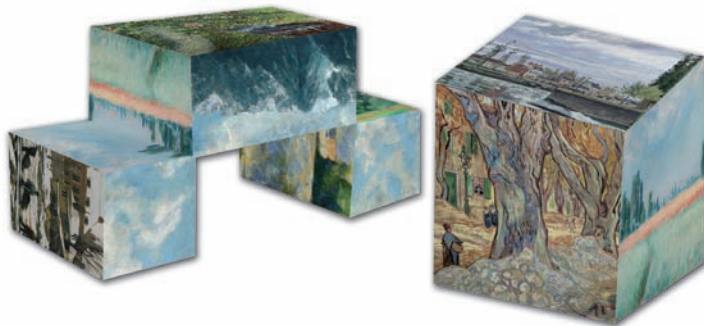
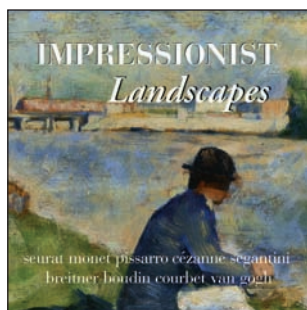
English

Impressionist Landscapes

The Cleveland Museum of Art - Cleveland, OH , USA

Excerpt from storycard:

While walking through the town that November, Van Gogh was struck by the sight of the laborers repairing a road beneath immense plane trees. Rushing to capture the yellowing leaves but lacking a proper canvas, he painted on a piece of cheap linen that had a pattern of small red diamonds, visible in the picture's many unpainted areas. "In spite of the cold," he wrote to his brother in Paris, "I have gone on working outside till now, and I think it is doing me good and the work too." Shortly after completing this painting he produced another version of the same subject that is now in the Phillips Collection, Washington, D.C.



Please also see our on-line catalog at www.mimcubes.com to see complete images of all of our cubes

Museum Gifts LLC dba Made in Museum USA
10 Hamilton Ave.
Barrington, RI 02806
Tel: (401) 245-3897 - Fax: (401) 633-6737
Contact: usa@madeinmuseum.com

